



*COMPANY PRESENTATION*

**QUALITY SPARE PARTS  
FOR **BOTTLING** AND **PACKAGING**  
MACHINERY AND LINES**

## WHAT WE DO

BBM provides a wide range of spare parts compatible with bottling and packaging machinery, ensuring effective solutions to meet every customer's production needs.

BBM represents a valid independent alternative for the supply of spare parts, having a large warehouse of mechanical, pneumatic, and electronic components compatible with the main brands in the sector.

## WHY US?

Compatible spare parts

Certified quality

Convenient prices

Speed and availability



# COMPATIBLE SPARE PARTS

**BBM offers a wide selection of spare parts compatible with the main manufacturers in the sector...wide range of spare parts for every type of machinery!**



Our spare parts are **mechanical components**, such as screws, pins, sheets, plates; **pneumatic components**, such as silencers, fittings, cylinders, valves and pressure reducers; but also **electronic components**, such as photocells, motors and solenoid valves.

For **commercial parts**, we use high quality brands and guarantee optimal performance over time.

**SPEED**

**RELIABILITY**

**PRECISION**

# COMPATIBLE MACHINERY AND BRANDS

<b>BLOW MOLDERS</b>	SIDEL	KRONES	SMI	
	✓	✓	✓	
<b>FILLERS</b>	SIDEL	MELEGARI	PROCOMAC	CFT
	✓	✓	✓	✓
<b>SHRINK WRAPPERS</b>	SMI	OCME	KRONES	
	✓	✓	✓	
<b>HANDLE APPLICATORS</b>	TWINPACK	SMI	COMAG	
	✓	✓	✓	
<b>CAPPERS</b>	AROL	KRONES	BEROLASO	
	✓	✓	✓	
<b>LABELLERS</b>	KRONES	PE		
	✓	✓		
<b>END OF LINE</b>	SIMONAZZI	BERCHI	ROBOPAC	
<b>Pallettizers Depallettizers</b>	✓	✓	✓	



TEST IN  
LABORATORY

QUALITY  
DEPARTMENT

# CERTIFIED QUALITY

All our parts are laboratory tested and guaranteed to perform as the originals.

We have a dedicated Research & Development Office and a Quality Office. It is very important to us to **guarantee products that are perfectly compatible** with the manufacturers' originals (OEMs).



EXTREME  
PRECISION

COMPLIANCE  
REPORTS



**We have implemented a strict quality control procedure.** The control is particularly scrupulous for items that have important technical characteristics, such as centesimal tolerances, heat treatments or coating.



Thanks to **selected partners**, we carry out an in-depth analysis of compatible after-market items, to give the customer a quality equal to or superior to the original.



We draw up an **internal compliance report** to identify materials that do not meet our scrupulous technical requirements.



**We are always looking for the highest quality, implementing state-of-the-art processes.** We collaborate with the University of Bergamo - Dalmine Mechanical Engineering on Research & Development projects.

WHY US

# METROLOGY ROOM

**An ideal environment for achieving the highest levels of quality and productivity**

BBM quality is based on structured processes and high-precision measuring systems. Each compatible spare part undergoes rigorous checks inside the climate-controlled metrology room, equipped with ZEISS technologies and FARO 3D measurement systems for micron-level dimensional accuracy. Through **reverse engineering**, out-of-market components can be faithfully reproduced with full geometric and functional compliance. Collaboration with certified suppliers, continuous monitoring through vendor rating, and the issuance of compliance reports complete a quality process that ensures long-lasting performance, minimized downtime, and maximum operational reliability.



QUALITY SPARE PARTS

BY YOUR SIDE  
IN PACKAGING

# REVERSE ENGINEERING

**Complete measurements taken directly on the machine, even at the customer's premises, to obtain an accurate reproduction of the compatible spare part.**

A strength of BBM's Quality Department is the **Quantum Max measuring arm from FARO Technologies**. Thanks to dimensional measurement, the FARO measuring arm plays a key role in the faithful reproduction of spare parts, even those that are no longer commercially available. **In fact, the arm's dimensional measurement capabilities enable precise digitisation of spare parts, which are reproduced identically or even improved upon.**

**Accurate 3D measurements help us identify any defects and develop solutions.**

For large or complex-shaped parts, the arm delivers exceptional speed and accuracy, both in-house and at the customer's site, thanks to its portability and 2.5-metre reach. Complex 3D inspections and automated reports help us quickly identify defects and find rapid solutions.

**REPRODUCTION  
FAITHFUL OF  
SPARE PARTS**

**AVOID  
PROLONGED  
PRODUCTION  
DOWNTIME**

# CONVENIENT PRICES

The strength of our spare parts is a competitive value for money: our sales department meets the customer's needs with advantageous offers



## Lower list prices

We offer prices 10-20% lower than the market average, maintaining a very high quality



## Spare parts kit

We specialize in the supply of kits for the overhauls of certain machine units, so that the customer can save on the purchase of each individual piece for overhaul



## Loyalty programs

If necessary, we think of special discounts for our regular customers and on request we create stocks of basic necessities for routine maintenance



WHY US

## SPEED AND AVAILABILITY

### Minimum stocks and storage of parts needed in the event of machine downtime

To overcome the current of raw material and component procurement, we have developed a proven minimum stock program, **to ensure the availability of spare parts and thus a fast delivery to our customers.**

**We have a warehouse of over 1,800 m<sup>2</sup>**, almost 80 m<sup>3</sup>, with a wide range of parts ready to be shipped. Based on market demand, we always have the relevant spare parts available.

Our team of experts is always available to ensure fast delivery, **ensuring telephone and on-site assistance.**

BBM



QUALITY SPARE PARTS

BY YOUR SIDE  
IN PACKAGING

# FULL SERVICE

In addition to spare parts, BBM offers a complete technical service, with installation support, preventive and corrective maintenance, training, and consultancy.

**The dedicated spare parts office facilitates commercial, logistical and assistance activities**, even at an international level, with customized solutions for every need. Parts can also be marked to ensure traceability or facilitate identification during maintenance operations.



## ASSISTANCE SERVICES

Both remotely and on-site, thanks to our team of specialized technicians and agents operating all over the world.



## SPARE PARTS OFFICE

**dedicated to respond to every request**, and facilitate commercial, logistics, supply, and assistance activities in EU and non-EU countries.



## MARKING SPARE PARTS

Possibility of marking spare parts to ensure traceability or facilitate identification.

## E-COMMERCE

### Digitalization and convenience for more efficient and sustainable spare parts management

The new e-commerce marks an important step in the digitization of BBM services. The platform allows you **to enter spare parts lists**, get personalized offers and complete orders independently, making the process quick and transparent.

Among the most innovative functions is the **direct upload of lists in .csv format**: customers can import their files in a few seconds, avoiding manual entries and errors. The system immediately generates a quote or allows you to proceed with the order, with significant time savings and greater efficiency.

Online purchasing is also integrated with **customized stock programs**, dedicated kits, and minimum stocks, reducing the risk of machine downtime. Also, the new e-shop contributes to digital sustainability by reducing the use of paper and optimizing resources.

Discover the e-commerce [shop.bbmpackaging.com](https://shop.bbmpackaging.com)  
Request a DEMO – [info@bbmpackaging.com](mailto:info@bbmpackaging.com)



# NEWS

## Automated vertical warehouses and MES

BBM is investing significantly in optimizing logistics and spare parts management. In the coming months, four **automated high-bay warehouses** will be installed, adding almost 100 m<sup>3</sup> of storage capacity.

This solution will make it possible to make the most of the available space and to organize spare parts in a more rational way, speeding up picking and order processing times and minimizing the margin of error.

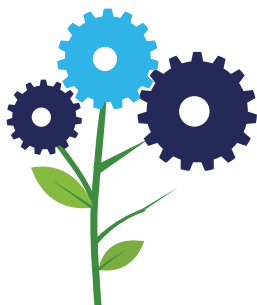
At the same time, the company is completing the implementation of a new **MES (Manufacturing Execution System)**, which will help monitor the product life cycle in real time: from the entry of the part into the warehouse, to quality controls, up to shipment to the customer. This tool will offer complete and immediate documentation, increasing the transparency and reliability, with direct benefits for customers in terms of response times and quality of service.



For information and requests,  
contact our Spare Parts Department, in the person of  
**Stefano Astori**  
**Spare Parts Manager | Resp. Ufficio Ricambi**  
T: (+39) 0345 182 6072 |  
stefano.astori@bbmpackaging.com



**GRAZIE.**



**BBM Service s.r.l.**  
Via Pregalleno, 24  
24016 San Pellegrino Terme  
Bergamo | Italy

Tel +39 0345.23642  
E-mail: [info@bbmpackaging.com](mailto:info@bbmpackaging.com)  
**bbmpackaging.com**